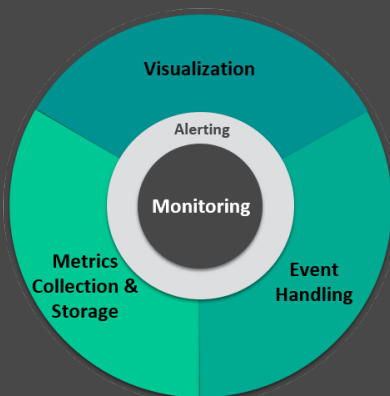


Maintain and maximize the health of your PubSub+ brokers with proactive monitoring of metrics and events

Effective monitoring lets you detect potential issues before they have negative impact, recover quickly from problems that do arise, and optimize both performance and resource utilization.

There are three key aspects of monitoring messaging and event distribution infrastructure:



Metrics

- Automated Collection
- Configurable polling
- Flexible database storage

Event Handling

- Status updates
- Security events
- Audit trails
- Event status correlation

Visualization

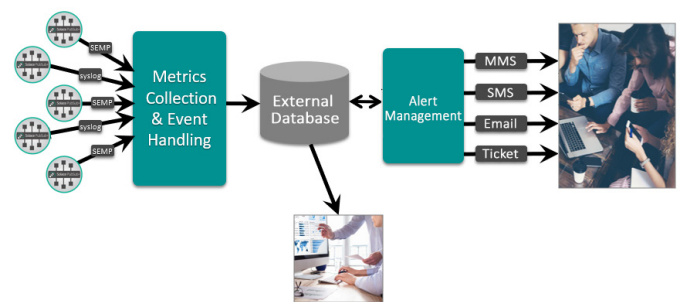
- Real-time and historical views
- Dashboards
- Historical trending analysis
- Alert Management

Solace PubSub+ Monitor collects and reports critical broker metrics and events so you can detect issues before they impact end-users.

PubSub+ Monitor sends alerts based on pre-configured thresholds and status events to help operations teams and application managers proactively address developing issues and optimize system performance.

- Improve uptime, performance and security by reacting to proactive alerts about system, VPN and client events
- Identify historical trends and gain actionable insights to optimize end-user services
- Optimize performance by collecting broker metrics and events, and sending them to a database for analysis and action
- Eliminates need to build or buy homegrown or third-party monitoring solutions

The monitoring of your brokers starts with collecting metrics and events, making them available for analysis, and sending alerts as required.



Unlike many other monitoring solutions, PubSub+ Monitor:

Collects both metrics and status events in real-time

Includes many pre-configured thresholds and alerts

Features agentless architecture for easy deployment

Unifies monitoring of software, hardware and as-a-service brokers

Flexibility to Meet Your Needs

PubSub+ Monitor is a complete, unified monitoring solution that includes all three of the modules described below. If your organization already has one of these components or you only want to purchase the collection functionality, you can purchase these three modules on an 'a la carte' basis.

PubSub+ Monitor

Collector Module

Simplifies data retrieval by using the Solace API to poll brokers, capture statistics about broker state and send them to a database.

Metrics Module

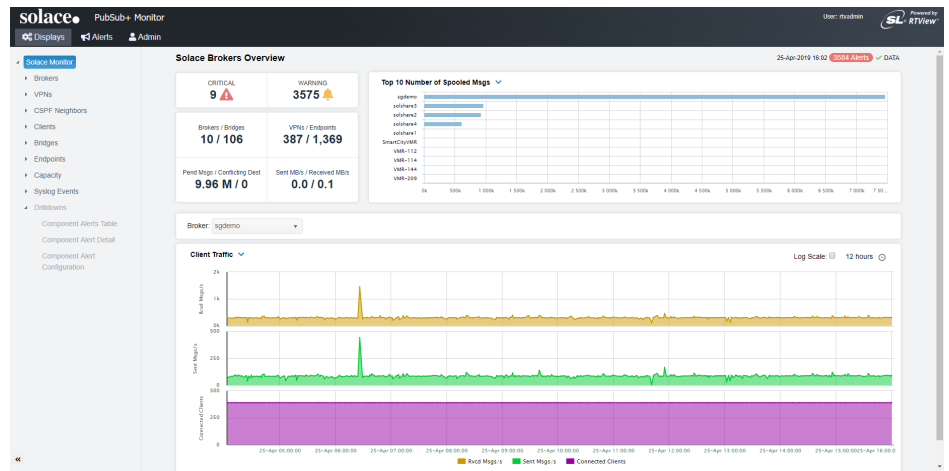
Augments the Collector Module with alerting and visualization.

Events Module

Receives event data as events transit the broker, enabling real-time alerts about system, VPN, and client events.

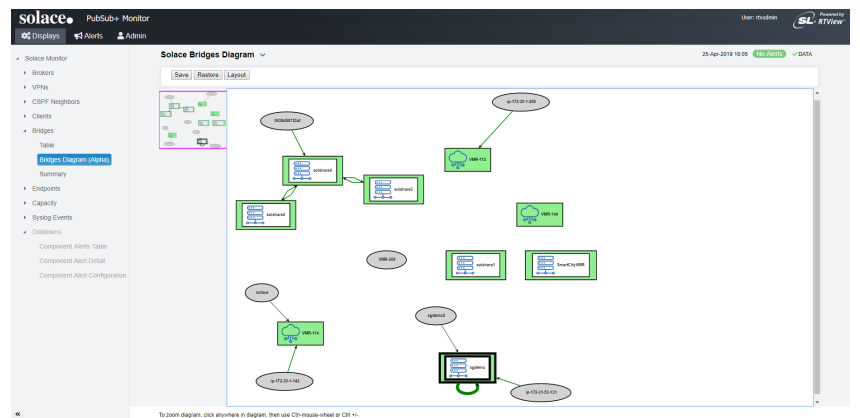
Dashboards

- Real-time visibility into metrics and events out of the box through pre-configured dashboards
- Supported on most device types



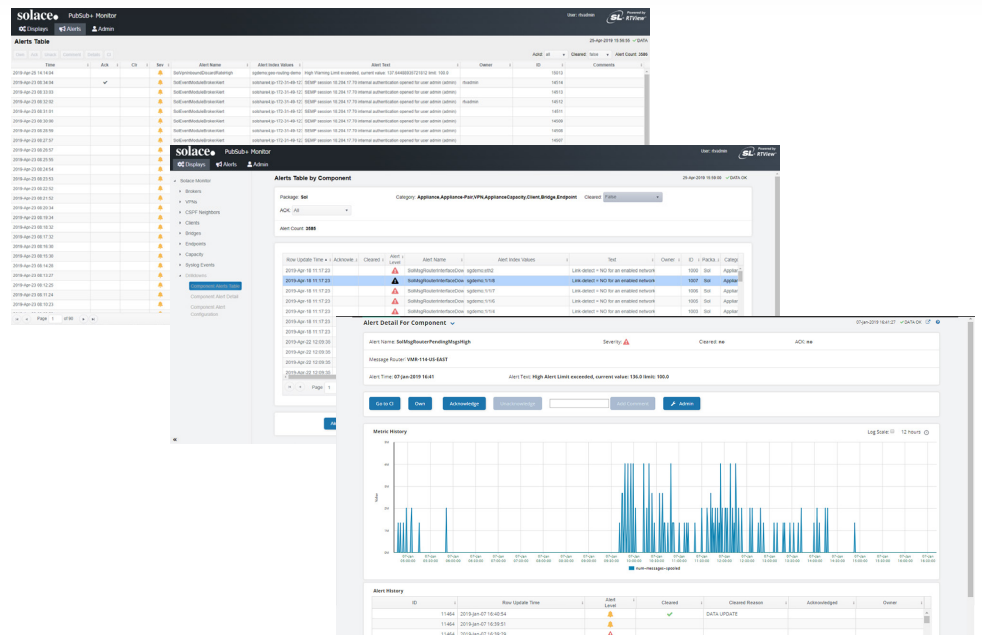
Auto-generated Topology Views

- Real-time visual understanding of inter-broker connections
- Pan and zoom to examine your system at a high level or drill down to individual brokers
- Launch PubSub+ Broker Manager from any element for easy access to the broker management interface



Alert-based Monitoring Events and Metrics

- Receive proactive alerts based on predefined or customized thresholds
- Instantly drill down to examine elements when alerts indicate an issue
- Easily click through to PubSub+ Broker Manager to take corrective action or override thresholds



solace.

Solace's smart data movement technologies use open APIs and protocols to rapidly and reliably route information between applications, devices and people across clouds. Elite enterprises and high-growth startups around the world use Solace to modernize legacy applications and successfully pursue analytics, hybrid cloud and IoT strategies. Learn more or contact us at <https://solace.com>.